

Umbrella drain, cannot be closed 1 1/4" - Chrome

SERIES-VARIOUS

10 126 970 Product version from 10/1/2023



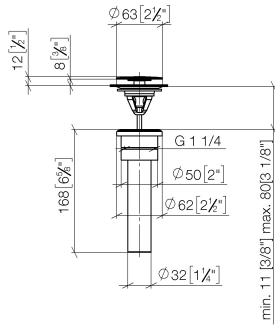
- Min. basin thickness 5/8"
- can not be closed

Commonly used with basins without overflow.

	Chrome	10 126 970-00 0010
	Brushed Platinum	10 126 970-06 0010
	Platinum	10 126 970-08 0010
	Durabronze (23kt Gold)	10 126 970-09 0010
	Dark Chrome	10 126 970-19 0010
	Light Gold (PVD)	10 126 970-26 0010
	Brushed Light Gold (PVD)	10 126 970-27 0010
	Brushed Durabronze (23kt Gold)	10 126 970-28 0010
	Matte Black	10 126 970-33 0010
	Brushed Dark Brass (PVD)	10 126 970-39 0010
	Brushed Bronze (PVD)	10 126 970-42 0010
	Brushed Champagne (22kt Gold)	10 126 970-46 0010
	Champagne (22kt Gold)	10 126 970-47 0010
	Brushed Chrome	10 126 970-93 0010
	Brushed Dark Platinum	10 126 970-99 0010

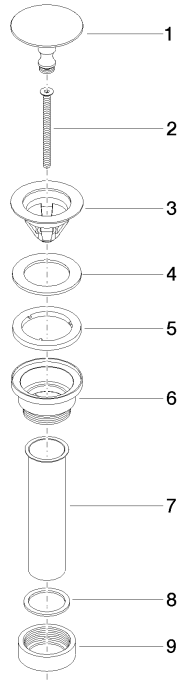
10 126 970 Product version from 10/1/2023

mm [inches]



10 126 970 Product version from 10/1/2023

Parts for other finishes can be found here: Brushed Platinum



Spare parts list

Number	Item Number	Designation	Number of units	Lead time
8	09 14 05 062 90	seal	1.00	2
1	09 31 20 097-00	plug	1.00	10
5	09 14 03 153 90	seal	1.00	2
3	09 11 01 038-00	cup	1.00	10
2	09 30 30 179 90	screw	1.00	2
6	09 11 10 156-00	connection	1.00	-
Spare part can no longer be ordered, please order the replacement item				
7	09 28 20 055-00	pipe	1.00	10
9	09 23 30 073-00	nut	1.00	10
4	09 14 05 061 90	seal	1.00	2