



# MADISON Tub mixer for wall-mounted installation with hand shower set - Chrome

MADISON








25 023 360 Product version from 7/1/2025



- 6-1/4" Projection
- Hand-held shower: COMPACT RAIN, flow rate max. 2 gpm (at 3 bar)
- Spout: Rectangular aerator
- Hand shower bracket
- Tub / shower diverter
- Flange diameter 2-3/4"
- 1/2" connection
- Center to center 6"
- Metal shower hose 49-1/4" with anti-twist device
- Spout flow rate max. 6.9 gpm

NOTE: Local building codes may require the use of an anti-scald device. Please refer to remote pressure balance valve (35 914 970 90)

Internal backflow preventer.

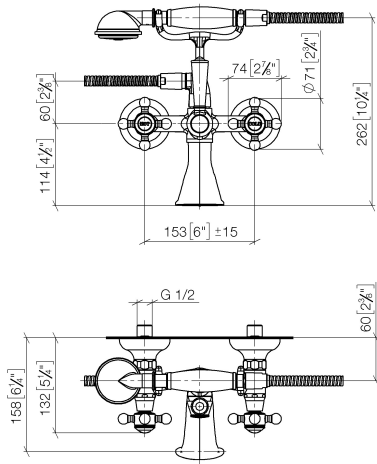
|   |                               |                    |
|---|-------------------------------|--------------------|
|  | Chrome                        | 25 023 360-00 0010 |
|  | Brushed Platinum              | 25 023 360-06 0010 |
|  | Platinum                      | 25 023 360-08 0010 |
|  | Durabrand (23kt Gold)         | 25 023 360-09 0010 |
|  | Brushed Durabrand (23kt Gold) | 25 023 360-28 0010 |
|  | Brushed Dark Brass (PVD)      | 25 023 360-39 0010 |
|  | Brushed Dark Platinum         | 25 023 360-99 0010 |



# MADISON Tub mixer for wall-mounted installation with hand shower set - Chrome

MADISON

25 023 360 Product version from 7/1/2025  
mm [inches]



## Codes & Standards

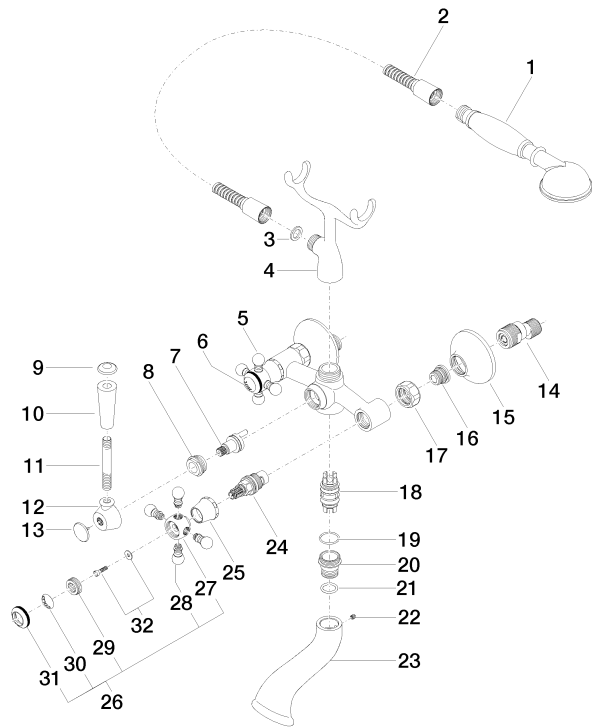
California Energy  
Commission  
(CEC)

**MADISON Tub mixer for wall-mounted installation with hand shower set -  
Chrome**

MADISON

25 023 360 Product version from 7/1/2025

Parts for other  
finishes can be found  
here: Brushed  
Platinum





# MADISON Tub mixer for wall-mounted installation with hand shower set - Chrome

MADISON

25 023 360 Product version from 7/1/2025

## Spare parts list

| Number | Item Number        | Designation   | Number of units | Lead time |
|--------|--------------------|---|-----------------|-----------|
| 5      | 04 20 36 002 07-00 | handle ( hot )  | 1.00            | 10        |
| 17     | 09 23 30 010-00    | nut   | 2.00            | 10        |
| 10     | 11 170 370-00      | MADISON Lever insert - Chrome                                       | 1.00            | 10        |
| 25     | 09 21 02 055-00    | cover   | 2.00            | 10        |
| 24     | 90 90 03 131 00 90 | top   | 2.00            | 2         |
| 13     | 09 30 30 064-00    | screw   | 1.00            | 10        |
| 14     | 04 11 04 030 00 90 | connection  | 2.00            | 2         |
| 29     | 09 20 83 006 90    | handle  | 2.00            | 2         |
| 26     | 04 20 36 002 06-00 | handle ( cold )   | 1.00            | 10        |
| 4      | 04 17 20 010 00-00 | holder  | 1.00            | 10        |
| 21     | 09 14 10 022 90    | seal  | 1.00            | 2         |
| 9      | 09 30 30 062-00    | screw   | 1.00            | 10        |
| 27     | 09 20 36 002-00    | handle  | 2.00            | 10        |
| 16     | 04 29 05 014 00 90 | nipple  | 2.00            | 2         |
| 8      | 09 23 10 007 90    | nut   | 1.00            | 2         |
| 28     | 09 20 36 004-00    | handle  | 8.00            | 10        |
| 12     | 09 18 20 011-00    | base  | 1.00            | 10        |
| 11     | 09 28 22 013 90    | pipe  | 1.00            | 2         |
| 1      | 28 002 970-00 0010 | MADISON Metal hand shower with porcelain (white)<br>handle - Chrome | 1.00            | 10        |
| 6      | 09 26 01 011 90    | accessories   | 1.00            | 2         |
| 15     | 09 27 39 010-00    | rosette   | 2.00            | 10        |
| 2      | 28 104 970-00      | Metal shower hose 1/2" x 1/2" x 49-1/4" - Chrome                    | 1.00            | 2         |
| 20     | 09 24 03 123 20 90 | nipple  | 1.00            | 2         |
| 30     | 09 26 01 010 90    | accessories   | 1.00            | 2         |
| 23     | 09 11 06 033 20-00 | spout   | 1.00            | 10        |
| 32     | 04 30 30 029 00 90 | fixing set  | 2.00            | 2         |
| 31     | 09 20 36 005-00    | handle  | 2.00            | 10        |
| 3      | 90 14 20 002 00 90 | seal  | 1.00            | 2         |
| 7      | 90 15 01 001 00 90 | diverter  | 1.00            | 2         |
| 19     | 90 14 10 056 00 90 | seal  | 1.00            | 2         |
| 22     | 90 31 11 030 00 90 | pin   | 1.00            | 2         |
| 18     | 90 21 10 010 00 90 | insert  | 1.00            | 2         |