

# VAIA Single-lever tub mixer with stand pipe for freestanding installation with hand shower set - Chrome

VAIA

25 863 809 Product version from 4/1/2025



- Spout: Round aerated stream
  - Water flow rate limited to max. 6.5 gpm
  - Hand-held shower: COMPACT RAIN, flow rate max. 1.8 gpm (at 3 bar)
  - Baton hand shower with descaling system
  - 11-1/4" Projection
  - Swiveling spout 360°
  - Integrated diverter
  - Total height 41-5/8" - 44-3/8"
  - Hand shower bracket
  - Lower body height 22-1/4" - 25"
  - Height to aerator/spout outlet 36-3/8" - 39-1/8"
  - Flanges Ø 5-3/8"
  - Metal shower hose 49-1/4" with anti-twist device
- NOTE: Local building codes may require the use of an anti-scald device. Please refer to remote pressure balance valve (35 914 970 90) Internal backflow preventer.**

NOTE: Local building codes may require the use of an anti-scald device. Please refer to remote pressure balance valve (35 914 970 90) Internal backflow preventer.

	Chrome	25 863 809-00
	Brushed Platinum	25 863 809-06
	Platinum	25 863 809-08
	Dark Chrome	25 863 809-19
	Brushed Durabrass (23kt Gold)	25 863 809-28
	Brushed Dark Brass (PVD)	25 863 809-39
	Brushed Bronze (PVD)	25 863 809-42
	Brushed Champagne (22kt Gold)	25 863 809-46
	Champagne (22kt Gold)	25 863 809-47
	Brushed Dark Platinum	25 863 809-99

## Required article

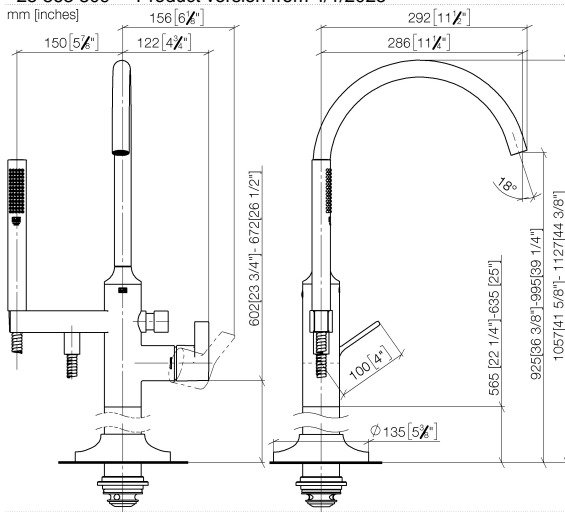


- Floor mounting rough set -** 35 949 970-90
- Max. rough in depth 5-7/8" 0010
  - Min. rough in depth 3-1/8"

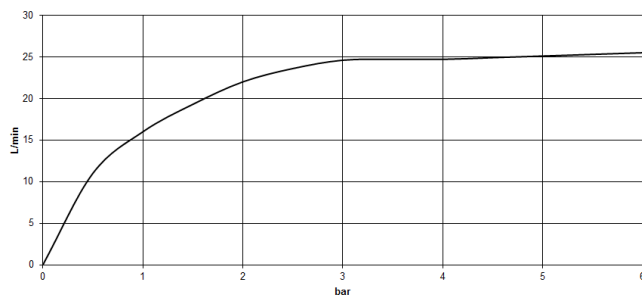
**VAIA Single-lever tub mixer with stand pipe for freestanding installation with hand shower set - Chrome**

VAIA

25 863 809 Product version from 4/1/2025



**Flow rate chart**



**Codes & Standards**

ASME A112.18.1	California Energy Commission (CEC)	cUPC	EN 1717
Scottish Water Byelaws	UK Water Supply Regulations		



VAIA Single-lever tub mixer with stand pipe for freestanding installation with hand shower set - Chrome

---

VAIA

25 863 809 Product version from 4/1/2025

Certificates and sustainability

---

IAPMO\_4976

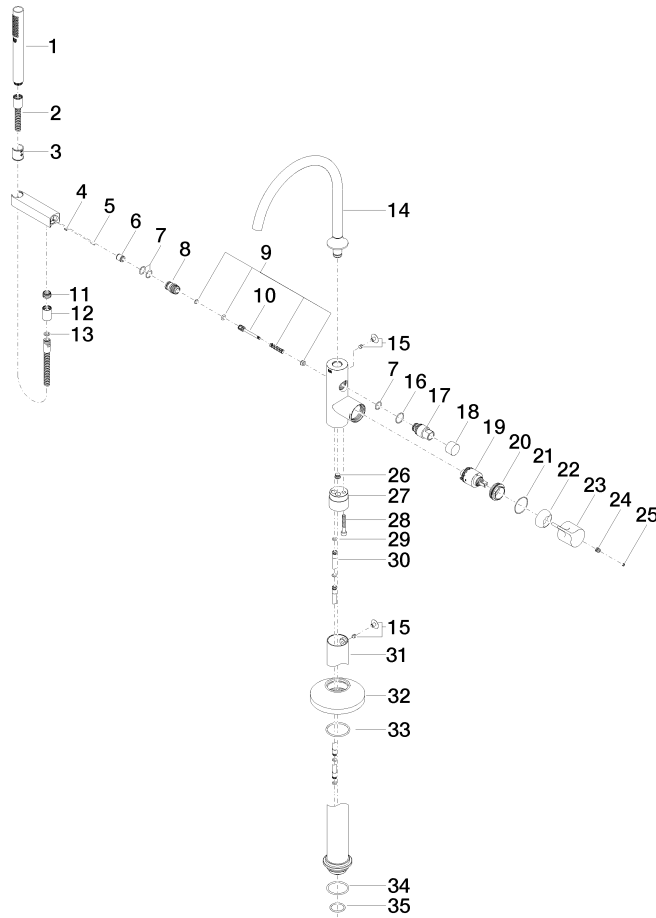
Belgaqua\_19\_77

Belgaqua\_24-003-2 WRAS\_250502

VAIA Single-lever tub mixer with stand pipe for freestanding installation with hand shower set - Chrome

VAIA

25 863 809 Product version from 4/1/2025





# VAIA Single-lever tub mixer with stand pipe for freestanding installation with hand shower set - Chrome

VAIA

25 863 809 Product version from 4/1/2025

## Spare parts list

Number	Item Number	Designation	Number of units	Lead time
28	09 30 30 111 90	screw	1.00	2
34	09 14 10 084 90	seal	1.00	2
29	09 14 10 139 90	seal	2.00	2
18	09 20 88 002-00	handle	1.00	10
17	09 21 34 081 20-00	nipple	1.00	10
22	09 28 30 036-00	cover	1.00	10
8	09 24 03 153 20-00	nipple	1.00	10
9	90 16 02 023 00 90	spring	1.00	2
25	90 31 20 087 00-00	plug	1.00	10
19	90 15 05 039 00 90	cartridge	1.00	2
32	09 27 80 022-00	rosette	1.00	10
30	04 28 22 025 00 90	connection	2.00	2
20	09 24 04 298 90	nut	1.00	2
11	09 24 03 069 90	nipple	1.00	2
27	09 24 03 152 20-00	adaptor	1.00	60
5	09 31 11 040 90	pin	1.00	2
14	90 28 22 327 00-00	spout	1.00	10
3	09 18 40 118 90	sleeve	1.00	2
21	09 14 10 037 90	seal	1.00	2
10	09 31 09 102 20-00	pull-rod	1.00	10
15	04 31 20 036 00 90	plug	2.00	2
4	09 31 11 058 90	pin	1.00	2
2	90 30 02 072 00-00	Metal shower hose 1/2" x 3/8" x 49-1/4" - Chrome	1.00	10
35	09 14 10 018 90	seal	1.00	2
23	09 20 80 022-00	handle	1.00	60
16	09 14 10 112 90	seal	1.00	2
31	04 28 22 030 00-00	pipe	1.00	10
33	90 14 10 129 00 90	seal	1.00	2
6	90 23 01 141 00 90	back-flow preventer	1.00	2
7	90 14 10 010 00 90	seal	3.00	2
24	90 31 11 030 00 90	pin	1.00	2
26	04 31 20 039 11 90	plug	1.00	2
13	90 14 20 026 00 90	seal	1.00	2
12	90 21 02 069 00-00	cover	1.00	10
1	90 12 11 140 41-00	shower	1.00	10