

## Rain shower with ceiling fixing 400 mm - Chrome

SERIES SPECIFIC

28 699 970 Product version from 3/13/2017



- rain shower Ø 400 mm
- PURE RAIN, max. flow rate 20 l/min (at 3 bar)
- Max. flow rate 20 l/min (at 3 bar)
- Function from: 12 l/min
- with anti-scale system
- quick clearing

**Technical data:**

- rosette Ø 60 mm optional
- 1/2" connection

**Notes:**

	Chrome	28 699 970-00
	Brushed Platinum	28 699 970-06
	Platinum	28 699 970-08
	Dark Chrome	28 699 970-19
	Light Gold (PVD)	28 699 970-26
	Brushed Light Gold (PVD)	28 699 970-27
	Brushed Durabrass (23kt Gold)	28 699 970-28
	Matte Black	28 699 970-33
	Brushed Gold (PVD)	28 699 970-37
	Brushed Dark Brass (PVD)	28 699 970-39
	Brushed Bronze (PVD)	28 699 970-42
	Brushed Dark Bronze (PVD)	28 699 970-43
	Brushed Champagne (22kt Gold)	28 699 970-46
	Champagne (22kt Gold)	28 699 970-47
	Brushed Chrome	28 699 970-93
	Brushed Dark Platinum	28 699 970-99

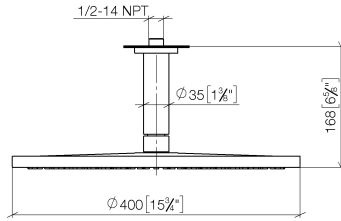
### Recommended miscellaneous



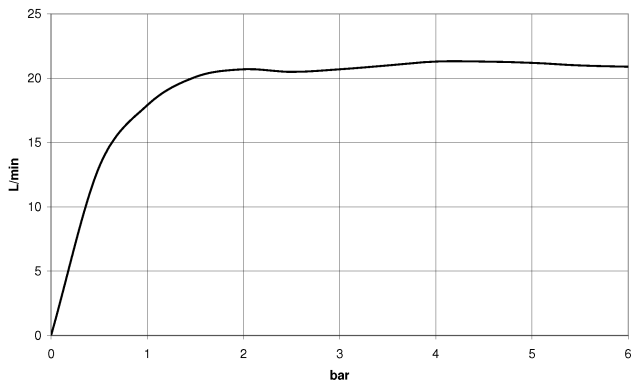
- Concealed wall elbow -** 35 085 970 90
- max. recess depth 163 mm
  - min. recess depth 90 mm

28 699 970 Product version from 3/13/2017

mm [inches]



**Flow rate chart**



**Codes & Standards**

DIN 4109

EN 1112

ISO 3822

Scottish Water  
Byelaws

UK Water Supply  
Regulations

Ü-Zeichen



## Rain shower with ceiling fixing 400 mm - Chrome

SERIES SPECIFIC

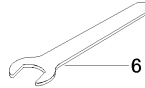
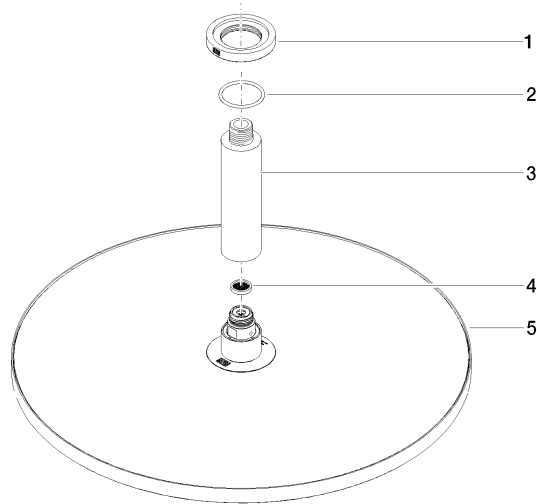
28 699 970 Product version from 3/13/2017

### Certificates and sustainability

LGA\_29

WRAS\_2212

DVGW\_DW-  
6517DN0



### Spare parts list

No.	Item Number	Name	Quantity used	Delivery time
2	09 14 10 141 90	seal	1.00	2
4	09 23 01 075 90	insert	1.00	2
1	09 27 22 040-00	rosette	1.00	10
3	09 11 03 080-00	connection	1.00	10
6	90 30 09 069 00 90	key	1.00	2
5	90 12 05 090 00-00	shower	1.00	10