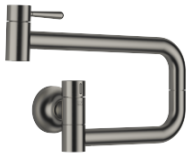


30 805 809 Product version from 7/1/2023



- 19-5/8" Projection
- Swiveling spout
- Laminar stream
- One water inlet, no mixing function
- Water flow rate limited to max. 1.5 gpm
- Two valves for on / off function
- Min. rough in depth 4-7/8"
- Max. rough in depth 3-1/8"
- lead-free
- This product can help a building meet the requirements of Green Building Rating Systems, e.g. LEED®, BREEAM®, DGNB

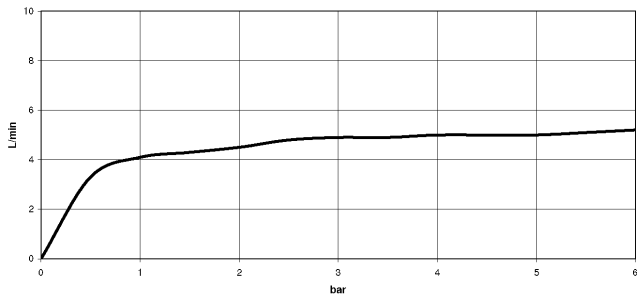
	Brushed Dark Platinum	30 805 809-99
	Chrome	30 805 809-00
	Brushed Platinum	30 805 809-06
	Platinum	30 805 809-08
	Durabronze (23kt Gold)	30 805 809-09
	Dark Chrome	30 805 809-19
	Brushed Durabronze (23kt Gold)	30 805 809-28
	Brushed Dark Brass (PVD)	30 805 809-39
	Brushed Bronze (PVD)	30 805 809-42
	Brushed Dark Bronze (PVD)	30 805 809-43
	Brushed Champagne (22kt Gold)	30 805 809-46
	Champagne (22kt Gold)	30 805 809-47
	Brushed Chrome	30 805 809-93

Required article



- POT FILLER Rough-in wall elbow - 35 087 970-90 0010**
- Min. rough in depth 3-1/8"
 - Max. rough in depth 4-7/8"

Flow rate chart



Codes & Standards

ASME A112.18.1	California Energy Commission (CEC)	cUPC	DIN 4109
ISO 3822	NSF372	NSF61	Scottish Water Byelaws
UK Water Supply Regulations	Ü-Zeichen		



VAIA POT FILLER Cold water valve - Brushed Dark Platinum

VAIA

30 805 809 Product version from 7/1/2023

Certificates and sustainability

LGA_29

IAPMO_N-4976

WRAS_240702

IAPMO_6397

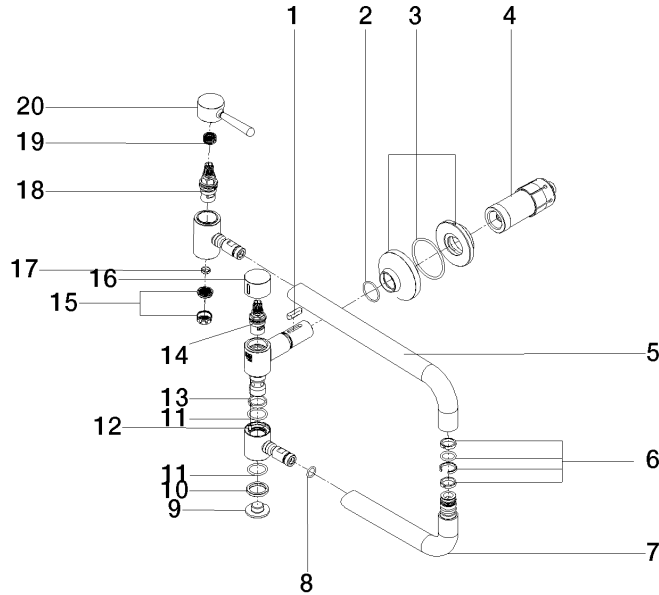
IAPMO_4976 (

EPD-DOR-20230287

-IBA1-EN

Environmental.prod

uct-declarat



Spare parts list

Number	Item Number	Designation	Number of units	Lead time
	18 90 90 03 146 00 90	top	1.00	2
	19 90 12 12 232 00 90	fixing cap	1.00	2
	11 09 14 10 015 90	seal	2.00	2
	7 04 28 22 221 10-99	pipe	1.00	20
	1 90 16 04 001 00 90	spring	1.00	2
	9 09 21 02 028-99	lid	1.00	20
	5 09 28 22 208-99	pipe	1.00	20
	2 90 14 10 063 00 90	seal	1.00	2
	3 90 27 87 039 00-99	rosette	1.00	20
	10 09 28 10 139 90	ring	1.00	2
	20 90 20 80 051 00-99	handle	1.00	20
	16 09 20 62 025-99	handle	1.00	20
	12 09 31 11 109 90	pin	1.00	2
	14 90 90 03 171 00 90	top	1.00	2
	8 90 14 10 077 00 90	seal	2.00	2
	13 09 28 10 136 90	ring	1.00	2
	17 09 14 05 002 90	seal	1.00	2
	4 90 30 01 213 00 90	connection	1.00	2
	15 09 29 03 089 90	aerator	1.00	60
	6 90 28 10 199 00 90	gasket kit	1.00	2