


36 120 809 Product version from 3/13/2017 to 2/20/2020




- automatic diverter
- cover plate Ø 150 mm
- WRAS

	Chrome	36 120 809-00
	Brushed Platinum	36 120 809-06
	Platinum	36 120 809-08
	Dark Chrome	36 120 809-19
	Brushed Durabronze (23kt Gold)	36 120 809-28
	Brushed Dark Brass (PVD)	36 120 809-39
	Brushed Bronze (PVD)	36 120 809-42
	Brushed Champagne (22kt Gold)	36 120 809-46
	Champagne (22kt Gold)	36 120 809-47
	Brushed Dark Platinum	36 120 809-99


Required miscellaneous

	Concealed single-lever mixer - •max. recess depth 105 mm •min. recess depth 80 mm	35 020 970 90
---	--	---------------

Recommended miscellaneous

	xGRID Attachment set for integrating in the dry wall construction -	12 340 970 90
---	--	---------------

Required miscellaneous

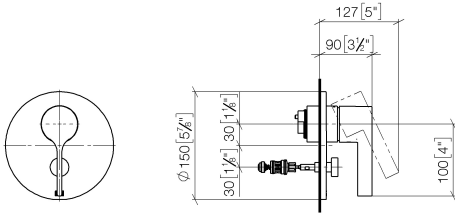
	Concealed single-lever mixer with backflow preventor - •max. recess depth 105 mm •min. recess depth 80 mm	35 021 970 90
---	--	---------------

Required miscellaneous

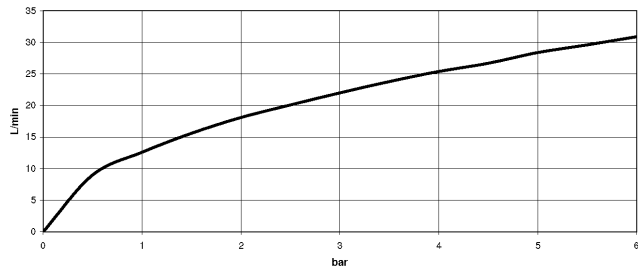
	xGRID Installation track 555 mm -	12 360 970 90
---	--	---------------

36 120 809 Product version from 3/13/2017 to 2/20/2020

mm [inches]



Flow rate chart



Codes & Standards

DIN 4109

ISO 3822

Scottish Water
Byelaws

UK Water Supply
Regulations

Ü-Zeichen



VAIA Concealed single-lever mixer with diverter - Chrome

VAIA

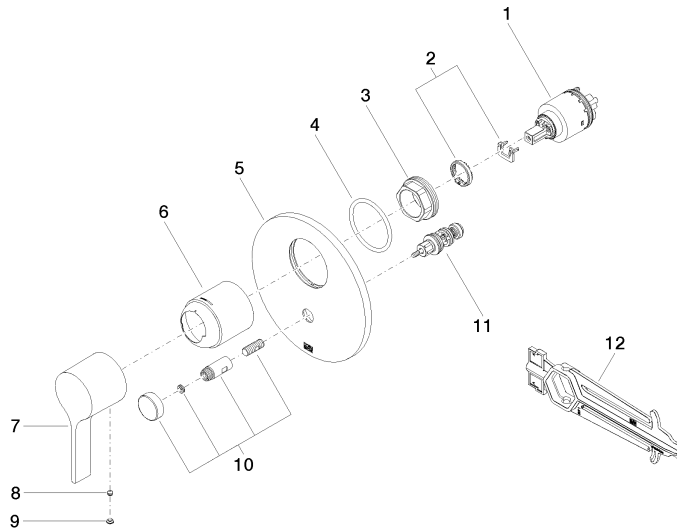
36 120 809 Product version from 3/13/2017 to 2/20/2020

Certificates and sustainability

LGA_19

WRAS_2207

36 120 809 Product version from 3/13/2017 to 2/20/2020



Spare parts list

No.	Item Number	Name	Quantity used	Delivery time
	3 09 24 04 448 90	nut	1.00	2
	9 90 31 20 087 00-00	plug	1.00	10
	7 09 20 80 023-00	handle	1.00	60
	5 09 11 02 261-00	plate	1.00	10
	1 90 15 05 038 00 90	cartridge	1.00	60
	10 90 31 09 139 00-00	pull-rod	1.00	10
	2 04 28 10 149 00 90	accessories	1.00	2
	4 09 14 10 084 90	seal	1.00	2
	11 90 21 34 081 00 90	diverter	1.00	2
	6 09 11 02 260-00	sleeve	1.00	10
	12 90 30 09 064 00 90	key	1.00	2
	8 90 31 11 063 00 90	pin	1.00	2