





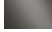


36 426 845 Product version from 3/9/2016 to 8/24/2020



- rotary diverter with volume control and shut-off function
- cover plate 150 x 90 mm
- temperature control handle with safety limit stop at 38°C
- hot water temperature limiter, can be preset
- WRAS

|   |                          |               |
|---|--------------------------|---------------|
|  | Chrome                   | 36 426 845-00 |
|  | Brushed Platinum         | 36 426 845-06 |
|  | Dark Chrome              | 36 426 845-19 |
|  | Brushed Light Gold (PVD) | 36 426 845-27 |
|  | Matte Black              | 36 426 845-33 |
|  | Brushed Chrome           | 36 426 845-93 |
|  | Brushed Dark Platinum    | 36 426 845-99 |

**Required miscellaneous**



- Concealed thermostat with built-in isolators -** 35 426 970 90
- max. recess depth 136 mm
  - min. recess depth 80 mm

**Required miscellaneous**



- Concealed thermostat -** 35 425 970 90
- max. recess depth 136 mm
  - min. recess depth 80 mm

**Required miscellaneous**



- xGRID Installation track 555 mm -** 12 360 970 90

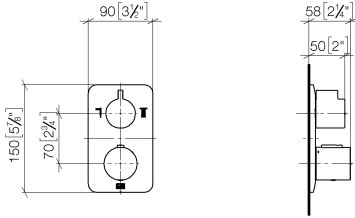
**Recommended miscellaneous**



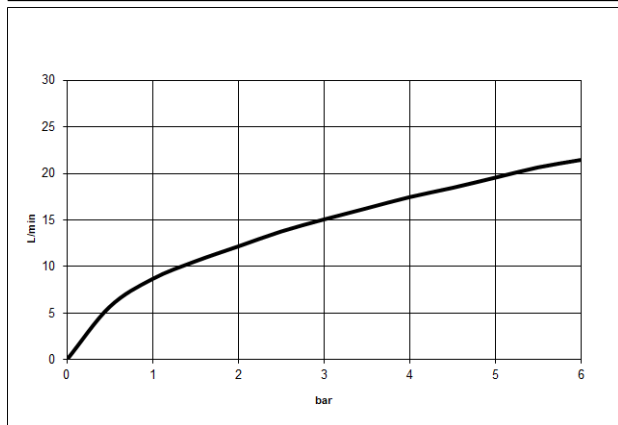
- xGRID Attachment set for integrating in the dry wall construction -** 12 340 970 90

36 426 845 Product version from 3/9/2016 to 8/24/2020

mm [inches]



**Flow rate chart**



**Codes & Standards**

|                             |           |            |                        |
|-----------------------------|-----------|------------|------------------------|
| DIN 4109                    | EN 1111   | ISO 3822   | Scottish Water Byelaws |
| UK Water Supply Regulations | Ü-Zeichen | VA-Zeichen | XP P 41-280            |



## LISSÉ Concealed thermostat with two function volume control - Chrome

LISSÉ

36 426 845 Product version from 3/9/2016 to 8/24/2020

### Certificates and sustainability

---

ACS\_20 ACC LY

LGA\_19

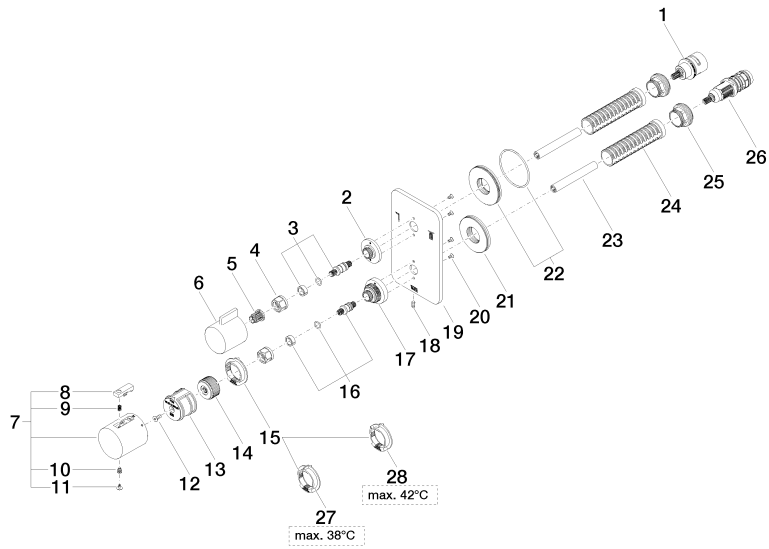
ETA\_20

DVGW\_DW-  
6512DN0

LGA\_19

WRAS\_250402

36 426 845 Product version from 3/9/2016 to 8/24/2020





## LISSÉ Concealed thermostat with two function volume control - Chrome

LISSÉ

36 426 845 Product version from 3/9/2016 to 8/24/2020

### Spare parts list

| No. | Item Number        | Name       | Quantity used | Delivery time |
|-----|--------------------|------------|---------------|---------------|
| 26  | 90 15 02 012 00 90 | cartridge  | 1.00          | 60            |
| 18  | 09 31 11 134 90    | pin        | 1.00          | 2             |
| 1   | 90 90 03 163 00 90 | diverter   | 1.00          | 2             |
| 28  | 09 28 10 151 90    | regulator  | 1.00          | 60            |
| 21  | 09 30 01 188 90    | disc       | 1.00          | 60            |
| 15  | 09 28 10 143 90    | regulator  | 1.00          | 60            |
| 27  | 09 28 10 150 90    | regulator  | 1.00          | 60            |
| 20  | 09 30 30 157 90    | screw      | 4.00          | 2             |
| 7   | 90 17 33 004 00-00 | handle     | 1.00          | 60            |
| 5   | 90 12 12 002 00 90 | fixing cap | 1.00          | 2             |
| 19  | 09 11 02 303-00    | plate      | 1.00          | 10            |
| 14  | 09 12 12 054 90    | base       | 1.00          | 2             |
| 17  | 09 12 12 051-00    | base       | 1.00          | 10            |
| 6   | 09 20 67 006-00    | handle     | 1.00          | 10            |
| 25  | 09 24 04 257 90    | nut        | 2.00          | 2             |
| 2   | 09 12 12 053-00    | base       | 1.00          | 10            |
| 9   | 90 16 02 027 00 90 | spring     | 1.00          | 2             |
| 22  | 90 30 01 190 00 90 | disc       | 1.00          | 2             |
| 4   | 90 23 30 023 00 90 | nut        | 2.00          | 2             |
| 12  | 90 30 30 124 00 90 | screw      | 1.00          | 2             |
| 24  | 90 18 40 077 01 90 | spindle    | 2.00          | 2             |
| 10  | 90 30 30 136 00 90 | screw      | 1.00          | 2             |
| 3   | 04 29 06 111 01-00 | spindle    | 1.00          | 10            |
| 13  | 90 12 12 052 00 90 | base       | 1.00          | 2             |
| 11  | 90 31 20 049 00-00 | plug       | 1.00          | 10            |
| 16  | 04 29 06 024 01-00 | spindle    | 1.00          | 10            |
| 23  | 90 23 01 124 00 90 | sleeve     | 2.00          | 2             |
| 8   | 90 21 33 011 00-13 | handle     | 1.00          | 2             |