





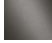


36 608 361 Product version from 7/1/2025



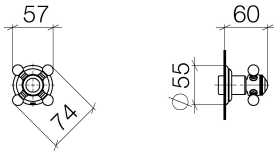
- rosette Ø 55 mm
- head part with cut-to-length spindle and sleeve
- 3x porcelain insert: HOT, COLD and NEUTRAL
- WRAS

	Chrome	36 608 361-00
	Brushed Platinum	36 608 361-06
	Platinum	36 608 361-08
	Durabass (23kt Gold)	36 608 361-09
	Brushed Durabass (23kt Gold)	36 608 361-28
	Brushed Dark Brass (PVD)	36 608 361-39
	Brushed Dark Platinum	36 608 361-99

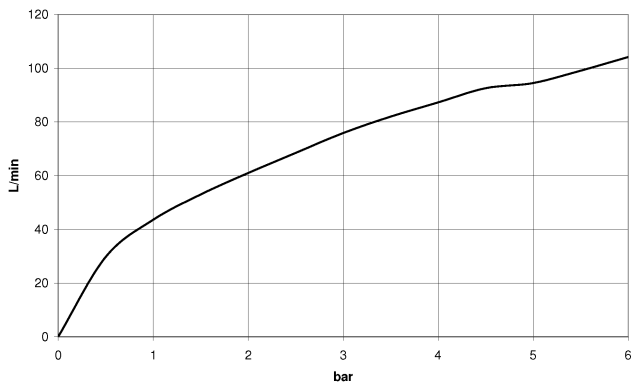
Required miscellaneous



- Wall valve 3/4" -** 35 608 970 90
- max. recess depth 145 mm
 - min. recess depth 75 mm



Flow rate chart



Codes & Standards

ASME A112.18.1

cUPC

Scottish Water
Byelaws

UK Water Supply
Regulations



MADISON Wall valve clockwise closing 3/4" - Chrome

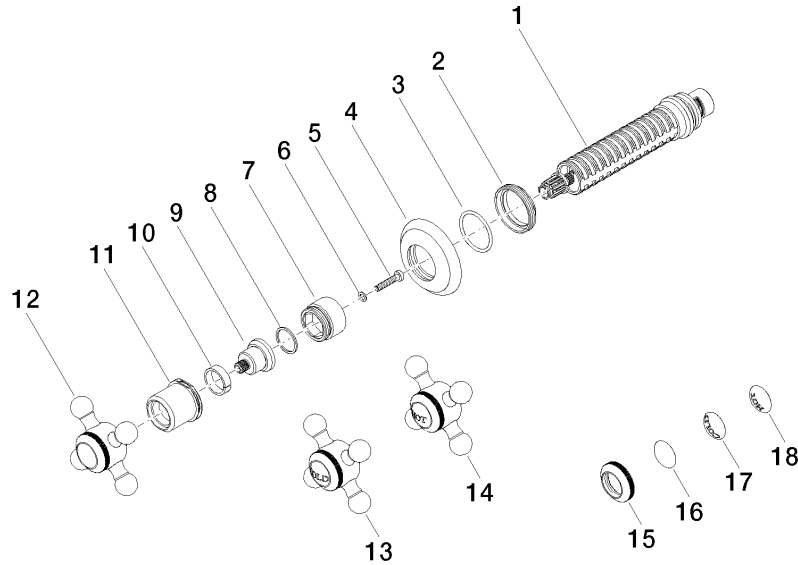
MADISON

36 608 361 Product version from 7/1/2025

Certificates and sustainability

WRAS_2010

IAPMO_4976 (



Spare parts list

No.	Item Number	Name	Quantity used	Delivery time
11	09 21 02 161-00	cover	1.00	10
7	09 18 30 007-00	sleeve	1.00	10
18	09 26 01 011 90	accessories	1.00	2
16	09 26 01 016 90	accessories	1.00	2
1	90 90 03 127 00 90	top	1.00	2
2	09 23 10 125-00	nut	1.00	10
9	09 12 12 064-00	base	1.00	10
15	09 20 36 005-00	handle	1.00	10
4	09 27 36 102-00	rosette	1.00	10
6	09 30 11 194 90	disc	1.00	2
13	04 20 36 100 00-00	handle (cold)	1.00	10
17	09 26 01 010 90	accessories	1.00	2
12	04 20 36 100 02-00	handle	1.00	10
14	04 20 36 100 01-00	handle (hot)	1.00	10
3	90 14 10 063 00 90	seal	1.00	2
10	90 14 15 021 00 90	ring	1.00	2
5	90 30 30 075 00 90	screw	1.00	2
8	90 28 10 030 00 90	ring	1.00	2