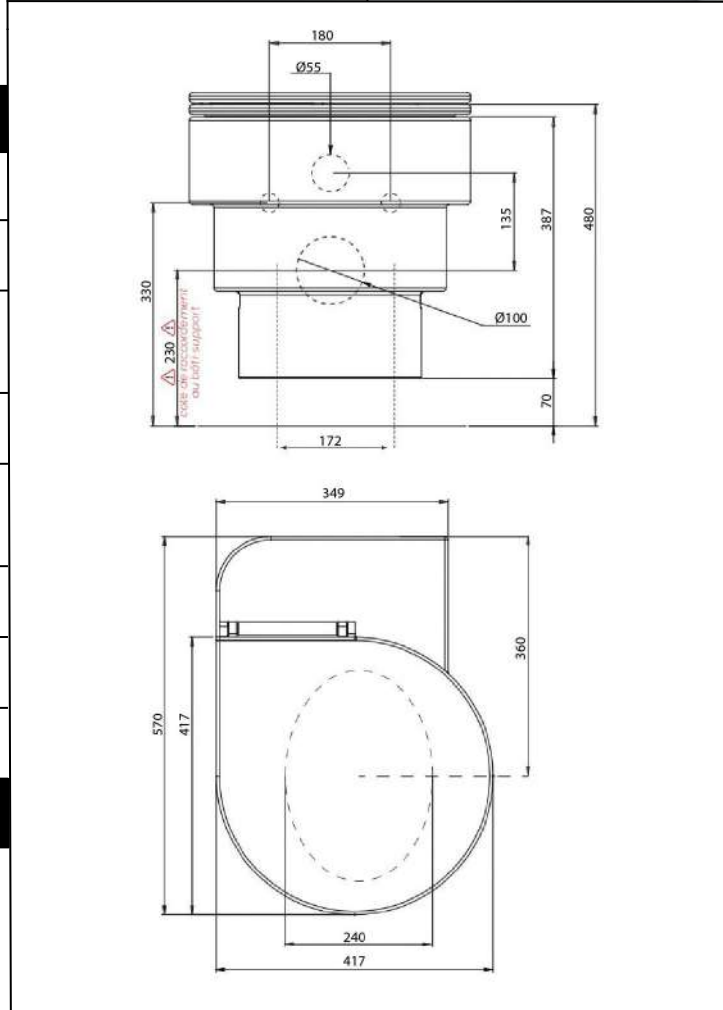


PRODUCT DETAILS	
Dimensions	570x417x387 (LxWxH in mm)
Weight	31 Kg
Material	Ceramic
Colors	Wide range of colors
Technology	Rimless, water-saving 3L/6L
<b>PMR standard supported:</b>	
Compliance with sanitary standard:	
<ul style="list-style-type: none"> <li>° NF EN 33: Connection dimensions</li> <li>° NF EN 997: Performance of toilet bowls</li> <li>° NF D12-101: Ceramics toilet bowls</li> </ul>	



SPECIFICATIONS	
Wall hung toilet for concealed cisterns	
Seat height	480 mm
Rimless toilet bowl	For easier cleaning/better hygiene
Hidden fasteners	
Optimal flushing performance	3/6 L
Toilet seat	Lacquered wood
Soft close hinges	Brushed stainless steel finish
Slim Pads	



CLEANING	
° Toilet seat - Metal parts:	
Neutral Ph product: window cleaner, black soap, household alcohol	
No abrasive sponge	
<p><b>⚠ Do not use the following solutions:</b>  <b>White vinegar, domestic acids, bleach, chloric acids, ammonia.</b></p>	
° Ceramic:	
The toilet bowl can be cleaned with all standard household toilet cleaning products.	

KIT CONTENT	
° Toilet	° Soft close hinges
° Toilet seat	° Fastening material

- ⓘ Support frame not provided.  
**IMPORTANT: installation of support frame :  
 evacuation - 230 mm on axis from the ground.**
- ⓘ Flush Plate not provided, 'Kaoline' matching flush-plate sold separately.

\* Our plans indicate all the necessary dimensions, taking into account standard tolerances. These dimensions are indicative. The exact dimensions can only be taken on the finished product.